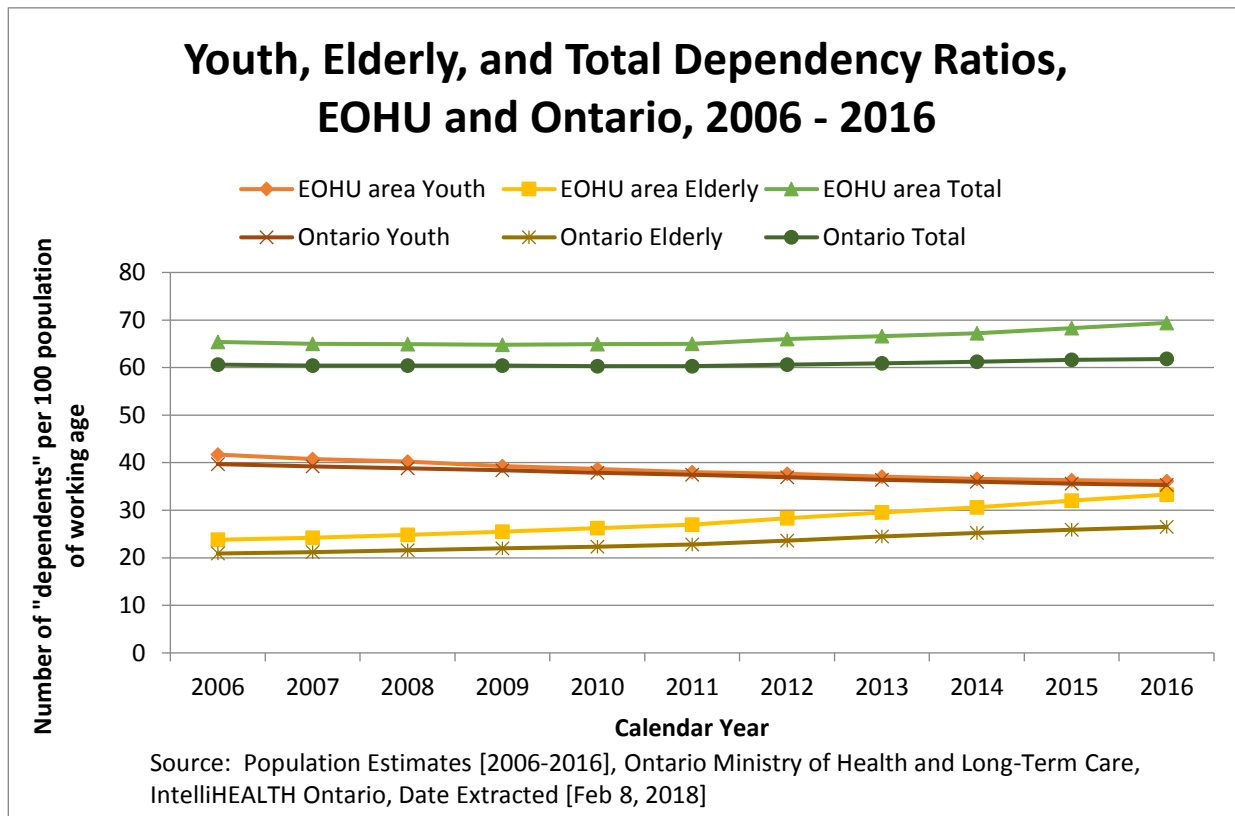


1-05. Dependency Ratios

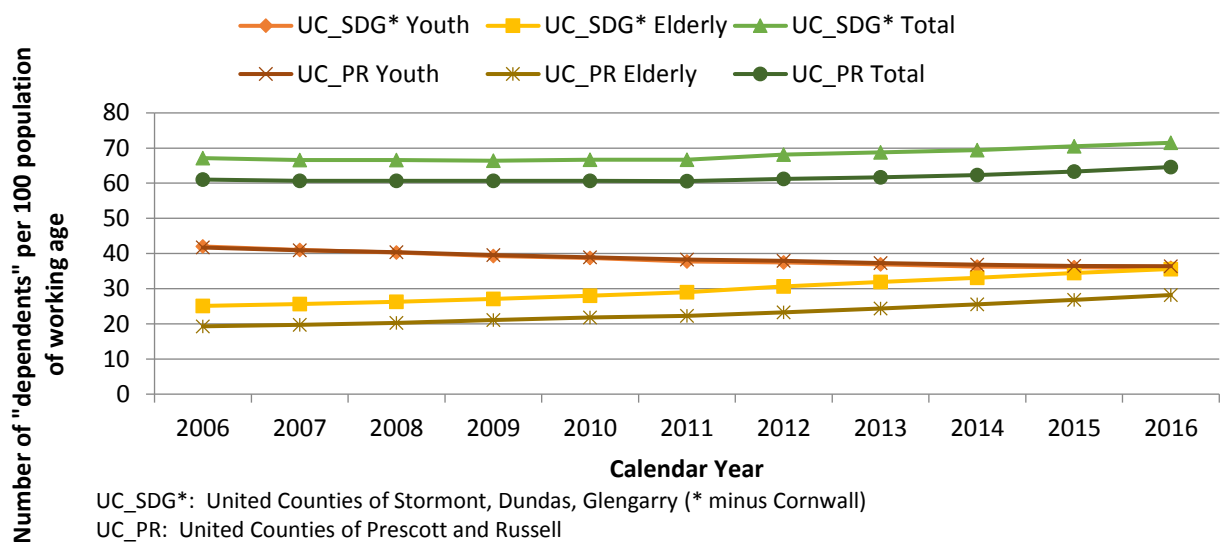


EOHU and Ontario, 2006 - 2016

Calendar Year	EOHU area Youth	EOHU area Elderly	EOHU area Total	Ontario Youth	Ontario Elderly	Ontario Total
2006	41.7	23.8	65.4	39.7	20.9	60.6
2007	40.8	24.2	65	39.2	21.2	60.4
2008	40.2	24.8	64.9	38.8	21.6	60.4
2009	39.3	25.5	64.8	38.4	22	60.4
2010	38.7	26.2	64.9	37.9	22.3	60.3
2011	38	27	65	37.5	22.8	60.3
2012	37.7	28.3	66	36.9	23.6	60.6
2013	37.1	29.5	66.6	36.4	24.5	60.9
2014	36.6	30.6	67.2	36	25.2	61.2
2015	36.3	32	68.3	35.6	25.9	61.6
2016	36.1	33.3	69.4	35.3	26.5	61.8

Source: Population Estimates [2006-2016], Ontario Ministry of Health and Long-Term Care, IntelliHEALTH Ontario, Date Extracted [February 8, 2018]

Youth, Elderly, and Total Dependency Ratios, UC_SDG* and UC_PR, 2006 - 2016



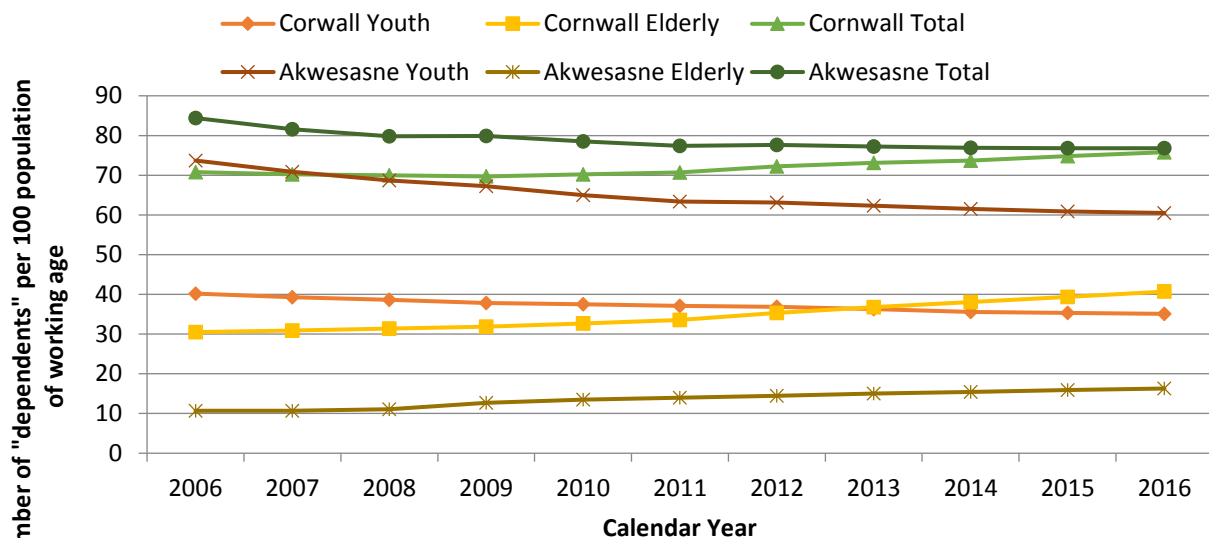
Source: Population Estimates [2006-2016], Ontario Ministry of Health and Long-Term Care, IntelliHEALTH Ontario, Date Extracted [Feb 8, 2018]

UC-SDG* and UC-PR, 2006 - 2016

Calendar Year	UC_SDG* Youth	UC_SDG* Elderly	UC_SDG* Total	UC_PR Youth	UC_PR Elderly	UC_PR Total
2006	42	25.1	67.1	41.7	19.3	61
2007	41	25.6	66.6	40.9	19.7	60.7
2008	40.3	26.3	66.6	40.4	20.3	60.7
2009	39.3	27.1	66.4	39.6	21.1	60.7
2010	38.7	28	66.7	38.9	21.8	60.7
2011	37.7	29	66.7	38.3	22.3	60.6
2012	37.5	30.6	68.1	37.9	23.3	61.2
2013	36.9	31.9	68.8	37.3	24.4	61.7
2014	36.3	33.1	69.4	36.8	25.5	62.3
2015	36.1	34.5	70.5	36.5	26.8	63.3
2016	35.9	35.6	71.5	36.4	28.2	64.6

Source: Population Estimates [2006-2016], Ontario Ministry of Health and Long-Term Care, IntelliHEALTH Ontario, Date Extracted [February 8, 2018]

Youth, Elderly, and Total Dependency Ratios, Cornwall and Akwesasne, 2006 - 2016



Source: Population Estimates [2006-2016], Ontario Ministry of Health and Long-Term Care, IntelliHEALTH Ontario, Date Extracted [Feb 8, 2018]

Cornwall and Akwesasne, 2006 - 2016

Calendar Year	Corwall Youth	Corwall Elderly	Corwall Total	Akwesasne Youth	Akwesasne Elderly	Akwesasne Total
2006	40.2	30.5	70.8	73.7	10.7	84.4
2007	39.3	30.9	70.2	70.9	10.7	81.6
2008	38.6	31.4	70	68.7	11.1	79.8
2009	37.8	31.9	69.7	67.2	12.7	79.9
2010	37.5	32.7	70.2	65	13.5	78.5
2011	37.1	33.6	70.7	63.4	14	77.4
2012	36.9	35.3	72.2	63.1	14.5	77.6
2013	36.3	36.8	73.1	62.3	15	77.2
2014	35.6	38.1	73.7	61.5	15.4	76.9
2015	35.3	39.4	74.8	60.9	15.9	76.8
2016	35.1	40.7	75.8	60.5	16.3	76.8

Source: Population Estimates [2006-2016], Ontario Ministry of Health and Long-Term Care, IntelliHEALTH Ontario, Date Extracted [February 8, 2018]